

LA PORTE ECONOMIC DEVELOPMENT CORRIDOR

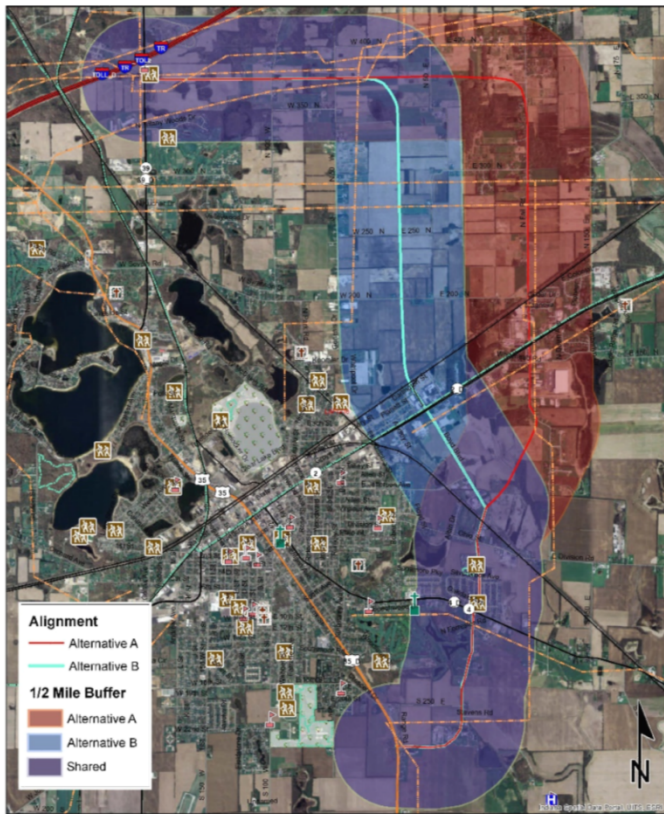
Community Advisory Committee

October 5, 2017

LaPorte County Government Annex Room 3



AGENDA



- Welcome & Introductions
- Project History
 - Previous Studies Completed
- Why Are You Here?
- Community Advisory Committee
- Transportation Process & NEPA
- Environmental Assessment
- Corridor Discussion
- Group Breakout Exercises & Review Results

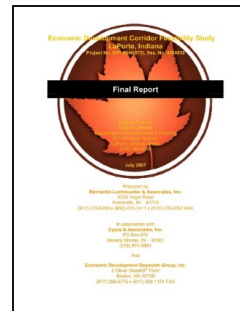
HISTORY OF ECONOMIC DEVELOPMENT CORRIDOR

Over 40 years ago, La Porte Mayor Tom Boyd was convinced of the need a project to route traffic to the east and west sides of the City.

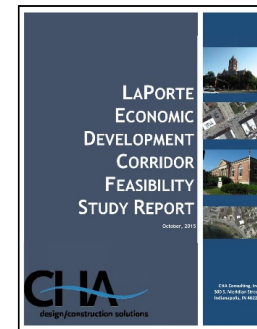
Today, this first section is known as Boyd Boulevard.

The Greater LaPorte Chamber of Commerce spearheaded research into how to enhance access to the Thomas Rose Industrial Park & east side industries.

2007 - Economic Development Corridor Study was conducted evaluating the benefits of an inner Loop versus an Outer Loop



2015 - LaPorte Economic Development Corridor Feasibility Study Report



2017 - Working on the National Environmental Policy Act (NEPA) document



This is a project now!

Build or No Build



WHY ARE YOU HERE?



ROLE - COMMUNITY ADVISORY COMMITTEE

- Two-way Conversation
 - Input & reporting
 - Sounding board
- Input on:
 - Parks & Recreational Areas
 - Emergency Access Routes
 - Safety Issues
 - Churches
 - Neighborhoods
 - School
 - Wetlands & Waterways
 - Historic Resources
 - Planned Bicycle & Pedestrian Facilities
- Mitigation Recommendations

COMMUNITY ADVISORY COMMITTEE



- Working Meetings
- Representative Official & One Alternate
- Courteous of Other's Viewpoints
- Be Engaged

THE TRANSPORTATION PROCESS & NEPA

PROJECT DEVELOPMENT PROCESS

Scoping

- Engineering Assessment
- Corridor Study / Feasibility Study

Environmental

- NEPA Document
- Human & Natural
- Build or No Build

WE ARE HERE

Preliminary Engineering

- Design
- Obtain Appropriate Permits / Mitigation Plans

Right-of-Way

- Land Acquisition
- Appraisal & Purchasing Upon NEPA Completion

Completion

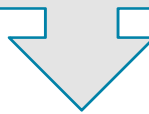
- Mitigation Sites Constructed / Monitoring Enforced
- Project Construction

ENVIRONMENTAL ASSESSMENT PROCESS

- Study Area
- Purpose & Need
- Alternatives
- Preferred Alternative

- Findings of No Significant Impacts
 - Yes?
 - No?

If Yes = Environmental Impact Statement
No = Start Designing & Building



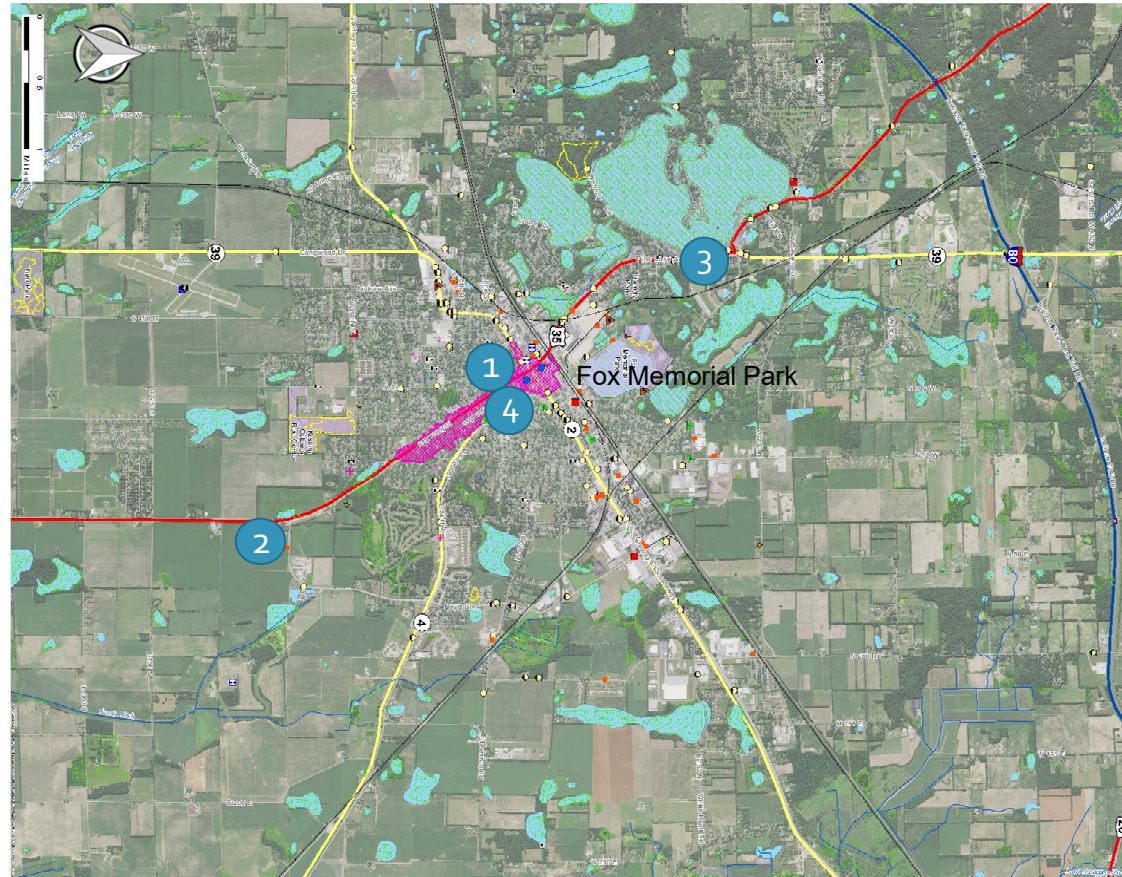
DEFINING THE PROJECT AREA



STUDY AREA



CORRIDOR FACTS

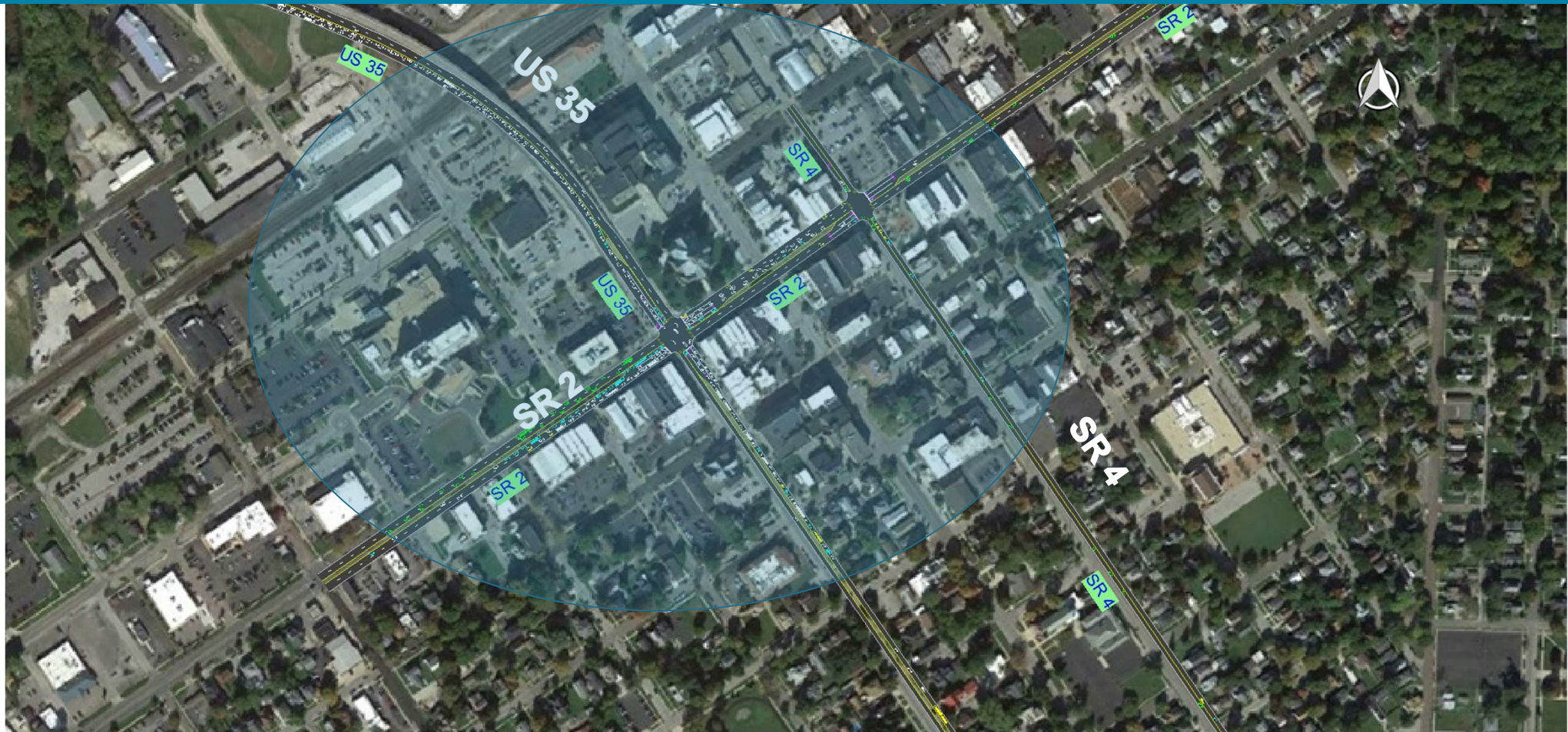


FOUR MAJOR INTERSECTIONS WOULD BENEFIT:

1. US 35 & SR 2
2. US 35 & Boyd Blvd
3. US 35 & SR 39
4. SR 2 & SR 4



CORRIDOR FACTS



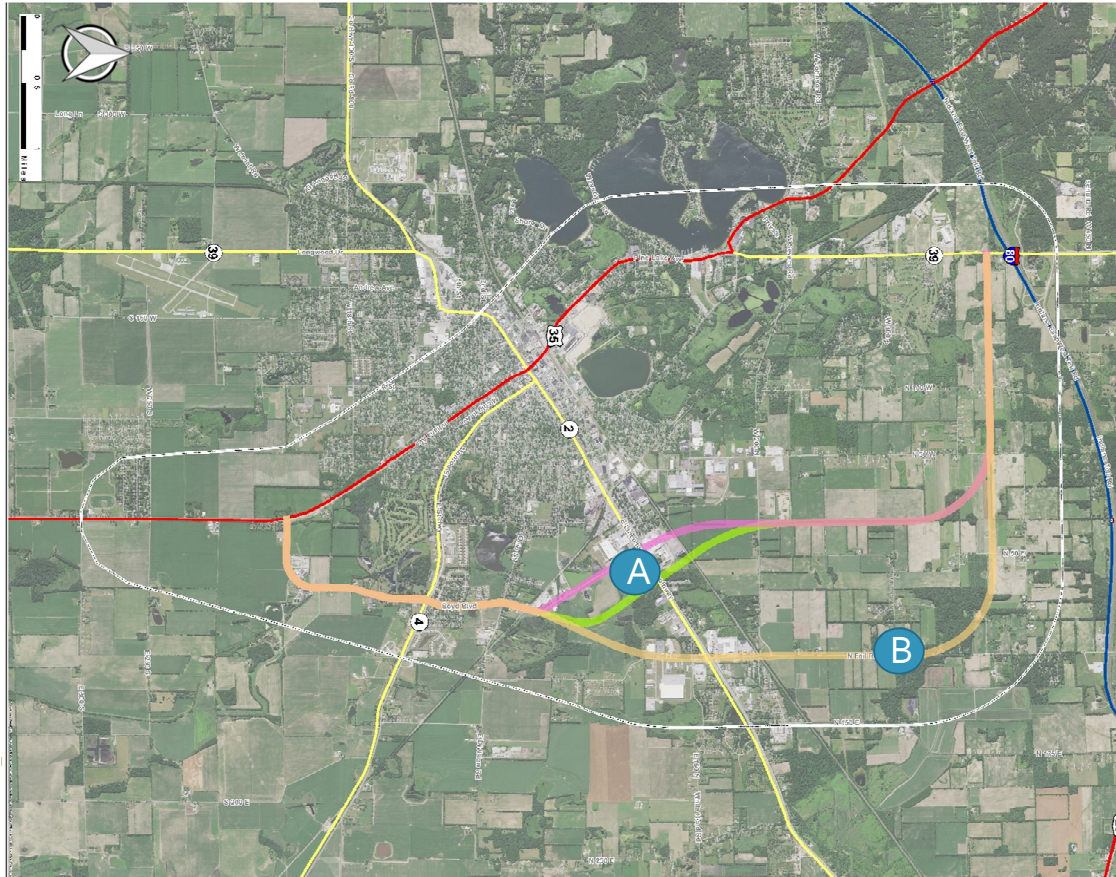
CORRIDOR FACTS



Level of Service

By 2035, if nothing is done (No Build) the queueing at the intersection of SR 2 & US 35 will be as shown in red during the PM period (4pm – 6pm)

PREVIOUS ALIGNMENTS



STUDY AREA/ PREVIOUS ALIGNMENTS

What happens?

- Thru Traffic
- Local Traffic



RESULTS

2035 – US 35 at SR 2

- No Build E
- Build Route A Route B
 - AM B B
 - PM B B

Level of Service	Control Delay (Seconds per Vehicle)	
	Unsignalized	Signalized
A	≤ 10	≤ 10
B	> 10 and ≤ 15	> 10 and ≤ 20
C	> 15 and ≤ 25	> 20 and ≤ 35
D	> 25 and ≤ 35	> 35 and ≤ 55
E	> 35 and ≤ 50	> 55 and ≤ 80
F	> 50	> 80

RESULTS

INTERSECTION	AVERAGE DELAY (sec/veh)					
	No Build		Route A		Route B	
	AM	PM	AM	PM	AM	PM
US 35 & SR 2	11.6	65.8	8.3	19.3	12.8	21
US 35 & Boyd Blvd	6.6	8.7	9.4	8.5	8.9	8.5
US 35 & SR 39	9.3	15.7	6.5	13.6	8.5	12.7
SR 2 & SR 4	8.1	13.3	8.2	11.8	12.5	13.6

RESULTS

CRASH DATA (2014-2017)

INTERSECTION	CRASH SEVERITY			
	Fatal	Injury	Property Damage Only	Total
SR 4 & Boyd Blvd	0	4	4	8
SR 2 & SR 4	0	1	12	13
SR 2 & Boyd Blvd	0	6	21	27
SR 2 & Fail Rd	0	7	14	21
Fail Rd & CR 200N	0	0	1	1
SR 39 & US 20	0	1	0	1
US 35 & SR 39	0	6	15	21
US 35 & SR 2	0	7	42	49
US 35 & Boyd Blvd	0	11	5	16
US 35 & US 6 (W)	0	1	15	16
US 35 & US 6 (E)	0	0	4	4

EXERCISE #1

Purpose & Need

EXERCISE #1

PURPOSE & NEED

- Reduce Congestion
- Improve Safety

EXERCISE #2

Name that Corridor

EXERCISE #2

Admit
Passport
Restor
e
ACCESS
Boyd Blvd Extension
Connections
Connector
Passageway
Entryway
LaPorte County Connector
Gateway
Access Downtown
Links
Portal
Boyd Boulevard Connector
Export from LaPorte
Extension



EXERCISE #3

Identification of Community Resources

EXERCISE #3

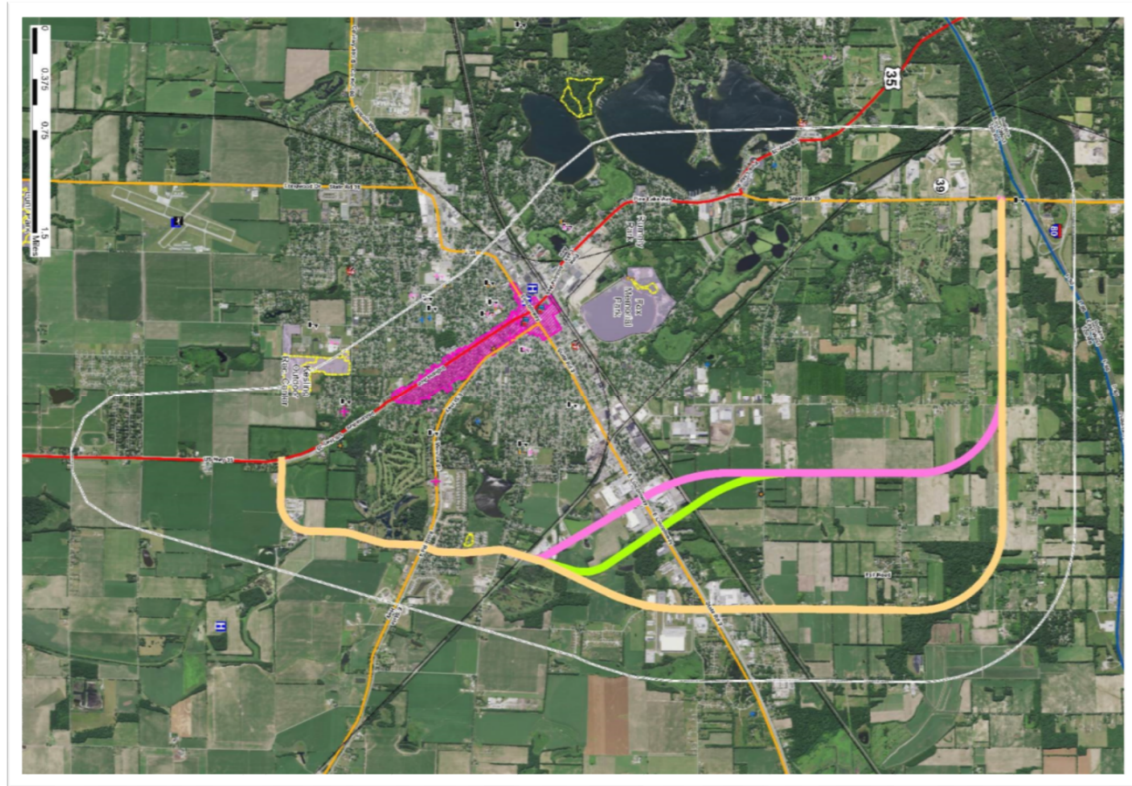
- Break into small groups – approximately 5 to 6 people per group & view the aerial mapping.
 - Identify community resources that may be affected by each alternative
 - Identify planned land use developments that are compatible / incompatible with the alternatives
 - Note the different types of effects for each identified resource
- Present findings to the group.
- Weigh importance of community resources.

EXERCISE #4

Identification of Proposed Alternatives

EXERCISE #4

Using the previously defined study area & alignments, highlight or sketch two different possible options.



NEXT STEP....
PUBLIC INFORMATION MEETING

November **??**, 2017